

# Struers LAN

# Module

## Installation Manual



Manual No.: 15627001

Date of Release: 1€H20FF



*Struers LAN Module  
Installation Manual*

**FCC Notice**

This equipment has been tested and found to comply with the limits for a Class A digital device, pursuant to Part 15 of the FCC Rules. These limits are designed to provide reasonable protection against harmful interference when the equipment is operated in a commercial environment. This equipment generates, uses, and can radiate radio frequency energy and, if not installed and used in accordance with the instruction manual, may cause harmful interference to radio communications. Operation of this equipment in a residential area is likely to cause harmful interference in which case the user will be required to correct the interference at his own expense.

Pursuant to Part 15.21 of the FCC Rules, any changes or modifications to this product not expressly approved by Struers A/S could cause harmful radio interference and void the user's authority to operate the equipment.

---

Always state *Serial No* and *Voltage/frequency* if you have technical questions or when ordering spare parts. You will find the Serial No. and Voltage on the type plate of the machine itself. We may also need the *Date* and *Article No* of the manual. This information is found on the front cover.

The following restrictions should be observed, as violation of the restrictions may cause cancellation of Struers legal obligations:

**Instruction Manuals:** Struers Instruction Manuals may only be used in connection with Struers equipment covered by the Instruction Manual.

**Service Manuals:** Struers Service Manuals may only be used by a trained technician authorised by Struers. The Service Manual may only be used in connection with Struers equipment covered by the Service Manual.

Struers assumes no responsibility for errors in the manual text/illustrations. The information in this manual is subject to change without notice. The manual may mention accessories or parts not included in the present version of the equipment.

The contents of this manual are the property of Struers. Reproduction of any part of this manual without the written permission of Struers is not allowed.

All rights reserved. © Struers 2011.

**Struers A/S**  
Pederstrupvej 84  
DK-2750 Ballerup  
Denmark  
Telephone +45 44 600 800  
Fax +45 44 600 801

---



## **Struers LAN Module Safety Precaution Sheet**

### **To be read carefully before use**

1. Installation and configuration of the Struers LAN Module must be carried out by the network administrator or somebody else trained in setting up computer equipment.
2. The operator(s) should be fully aware of the use of the equipment according to the Instruction Manual, located on the Instruction Manual CD.

---

The equipment should only be used for its intended purpose and as detailed in the Instruction Manual.

The accessory is designed for use with equipment supplied by Struers. If subjected to misuse, improper installation, alteration, neglect, accident or improper repair, Struers will accept no responsibility for damage(s) to the user or the equipment.

Dismantling of any part of the equipment, during service or repair, should always be performed by a qualified technician (electromechanical, electronic, mechanical, pneumatic, etc.).

---

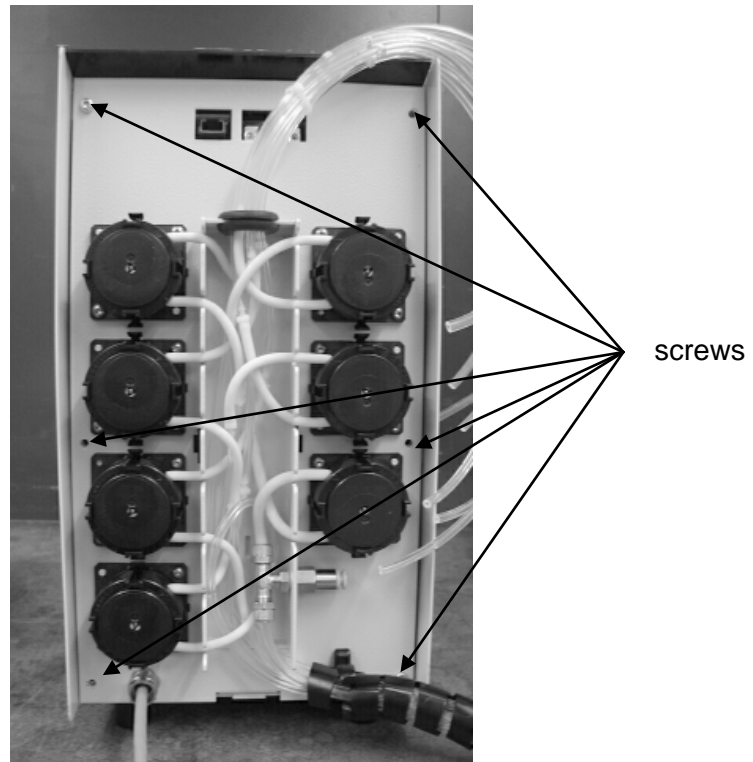


Table of Contents	Page
<b>1. Setup of LAN module</b>	
Installing the Struers LAN Module in the Dosing Unit .....	2
Removing the Struers LAN Module.....	3
Configuring the Struers LAN Module .....	4
Setting up the PC .....	4
Resetting the Struers LAN Module.....	13
<b>2. Installing the MethodPro Software on the PC</b>	
Requirements .....	14
Initial Steps.....	14
Configuring a Server or Stand-alone System .....	20
(Typical installation) .....	20
Starting the MethodPro Software .....	25
Configuring the Database .....	26
Server Configuration .....	26
Stand-alone Configuration .....	27
Operating the MethodPro Software.....	28

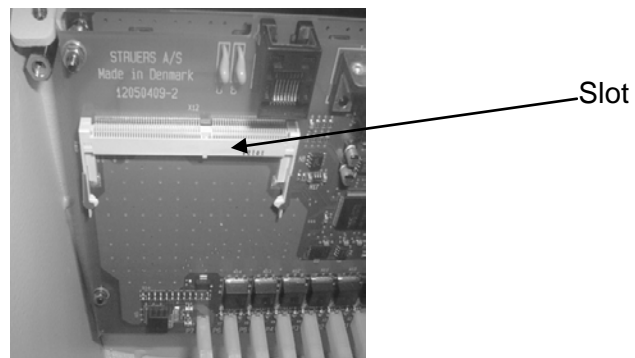
## 1. Setup of LAN module

### Installing the Struers LAN Module in the Dosing Unit

- Switch off the TegraPol /TargetMaster.
- Disconnect the dosing unit (TegraDoser-5 or TargetDoser).
- Unscrew the 6 screws from the back of the dosing unit and remove the plate with the pumps.

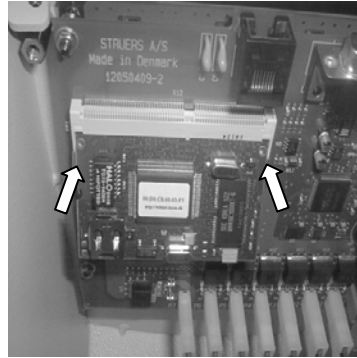


- Insert the Struers LAN Module in the slot.

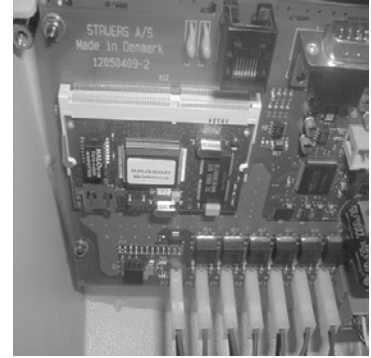


## Struers LAN Module Installation Manual

- Press the module forward ① and click into place ②.



①

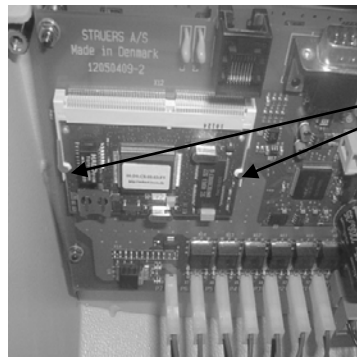


②

- Re-mount the back plate with the pumps and secure with the 6 screws.
- Re-connect the dosing unit.
- Switch the TegraPol/TargetMaster on.

## Removing the Struers LAN Module

- Press aside the two tabs holding the module.



Tabs

- The Struers LAN Module will drop away from the dosing unit and can then be removed.

## Configuring the Struers LAN Module

The Struers LAN Module is configured for IP address 192.168.0.1 by default. The IP address can be changed from a PC with a web browser.

To avoid conflict with other equipment on the LAN, connect a laptop and the dosing unit directly using a **CROSSED** 10/100 Base T Network cable, Cat.5 (also called a UTP Patch cable with RJ45 connectors. This cable is usually red).

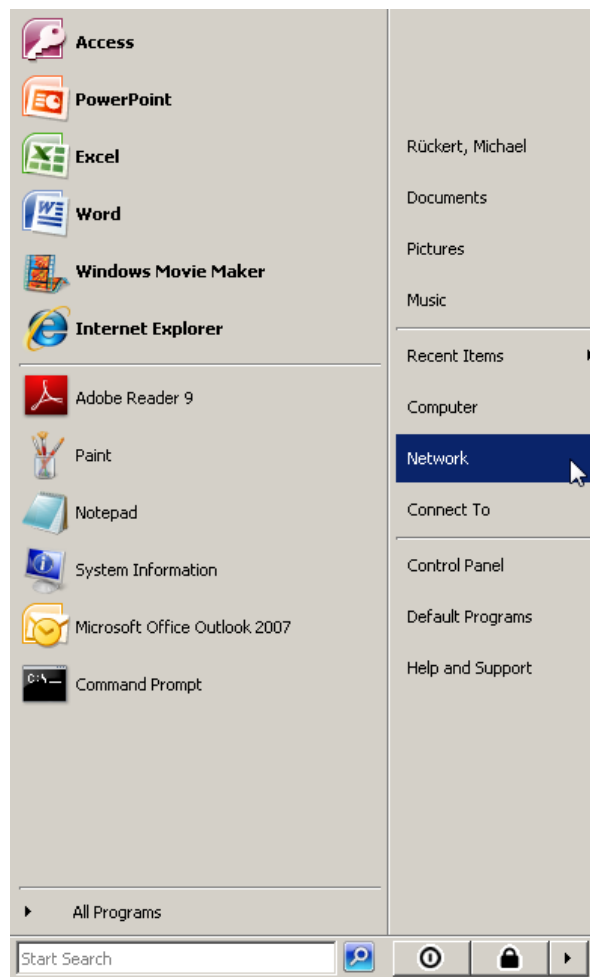
## Setting up the PC

To communicate between PC and the Struers LAN Module the laptop must be set up correctly. The IP address and subnet mask have to be configured first. To do this you need administrative rights on the laptop.

### **Note:**

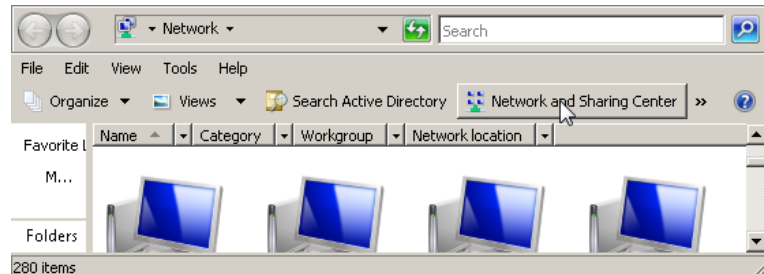
The following sample screens are generated when installing Struers LAN Module using Windows Vista. There may be variations when installing on other Windows operating systems.

- From the **Start** menu select **Network**.

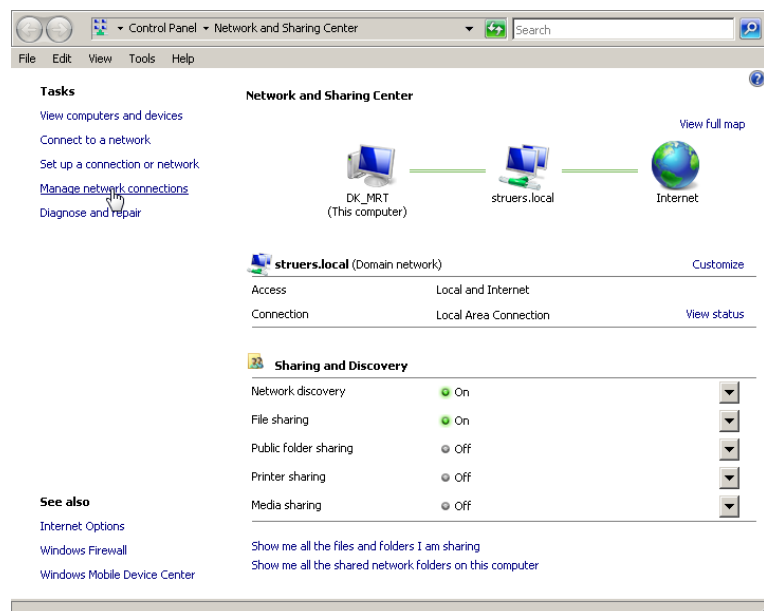




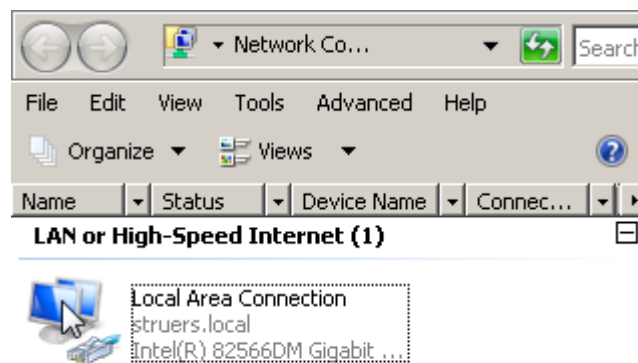
■ Select **Network and Sharing Center**.



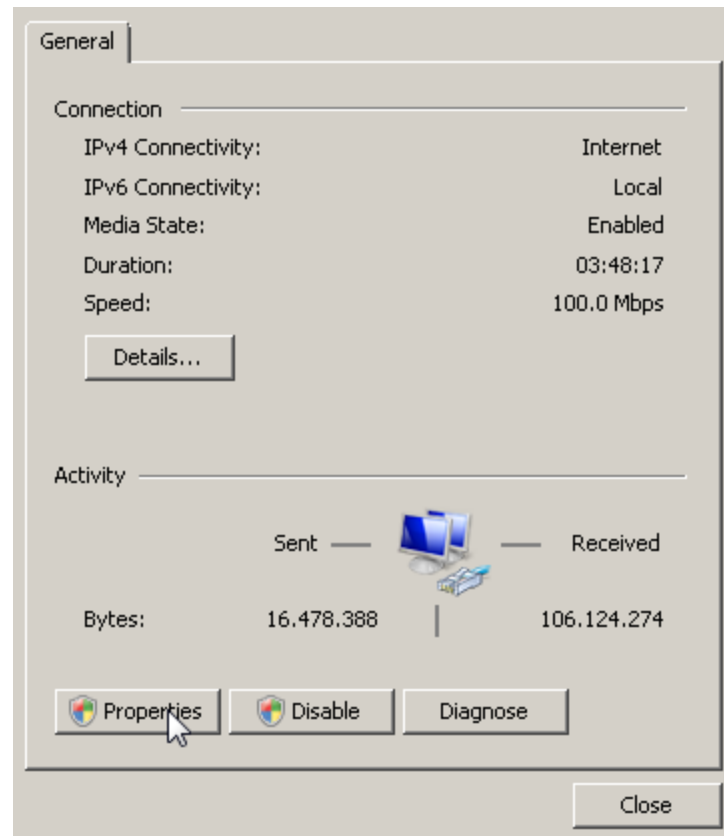
■ Select **Manage network connections**.



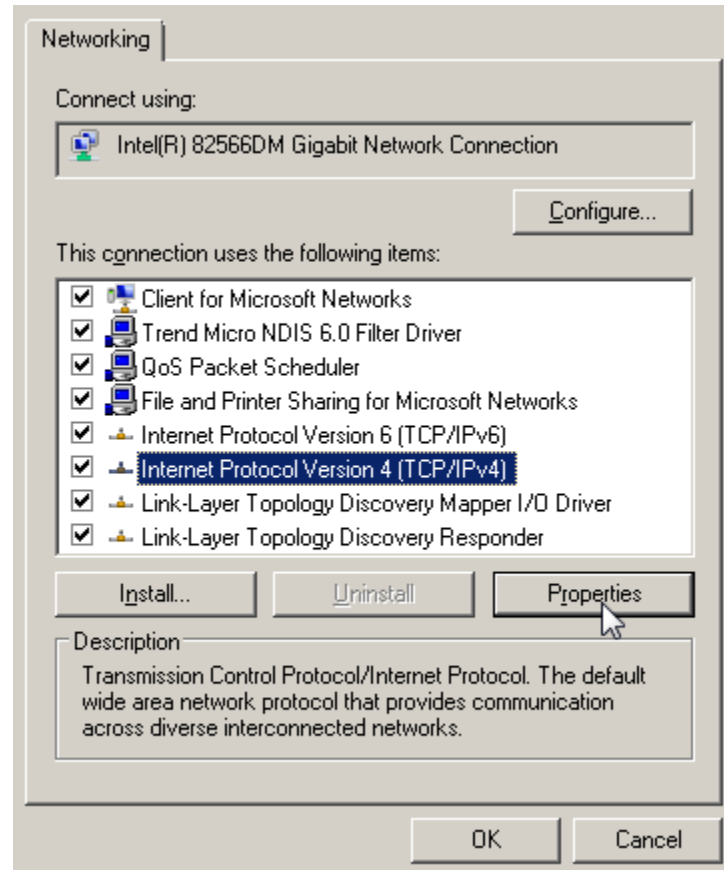
■ Double click on **Local Area Connection**.



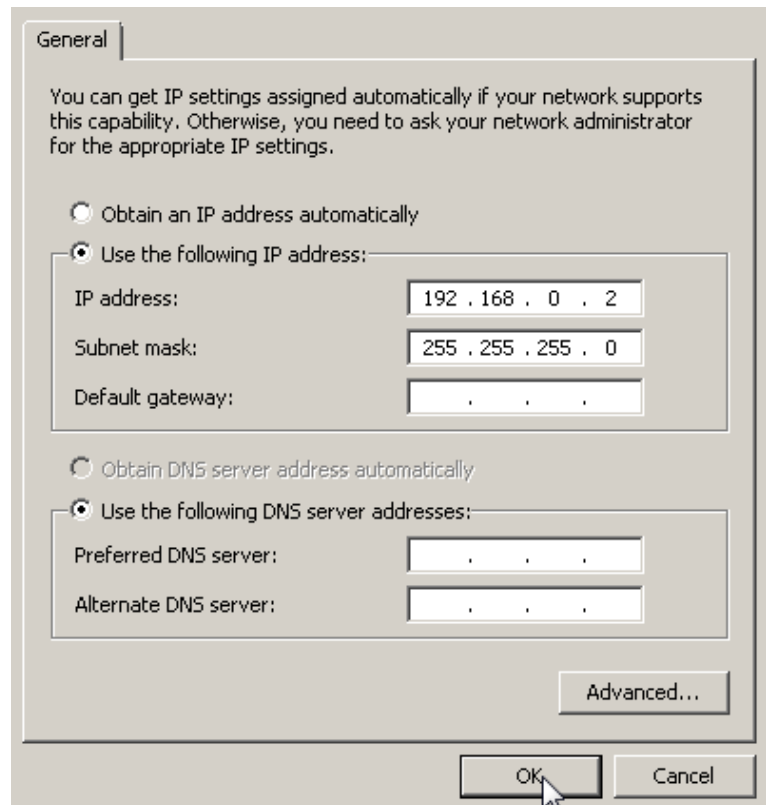
- Click on **Properties** and click Continue when the Windows UAC window pop's up.



- Select **Internet Protocol Version 4** and click **Properties**.

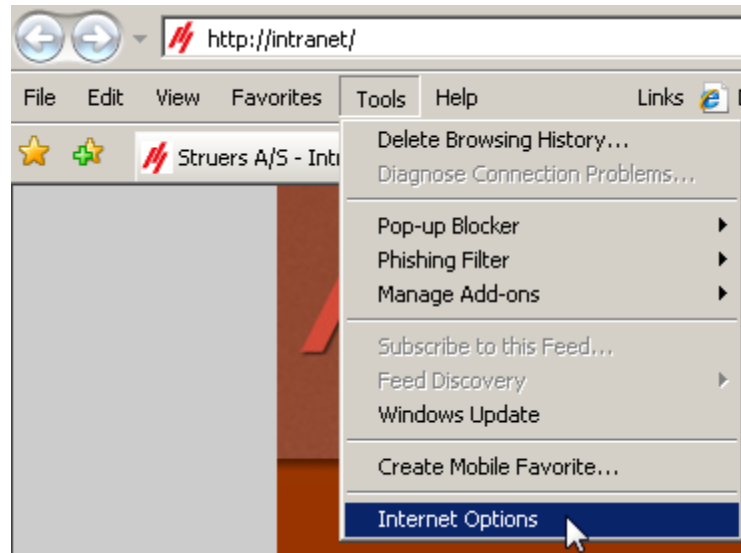


- Check **Use the following IP address.**
  - Set the **IP address** to: 192.168.0.2
  - Set the **Subnet mask** to: 255.255.255.0

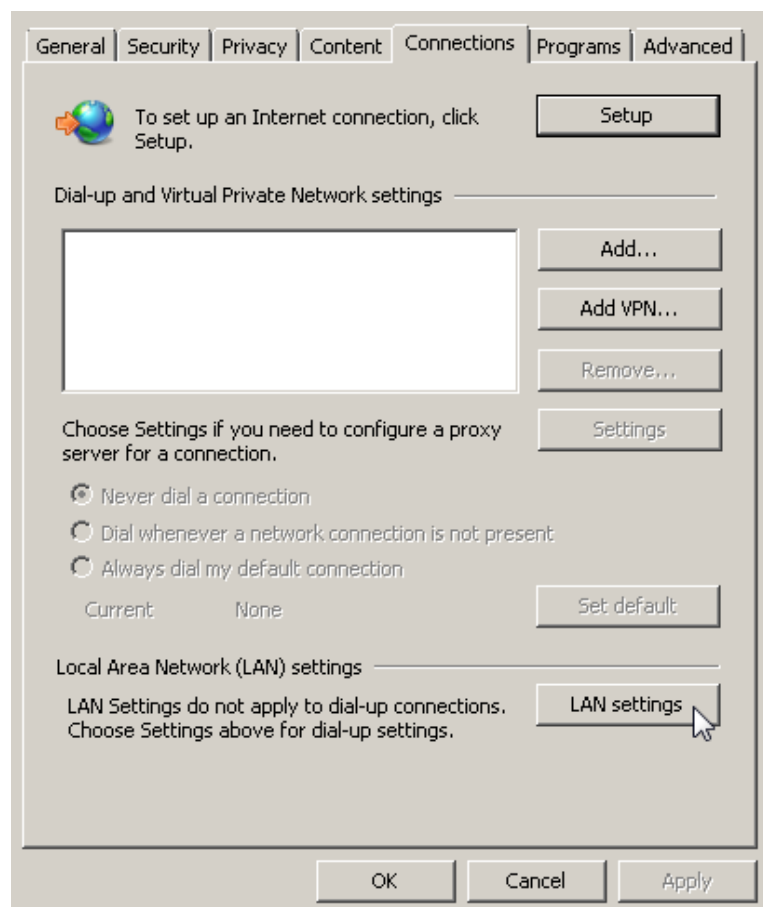


- Start the **Internet Browser**  
(in the following example Internet Explorer 7).

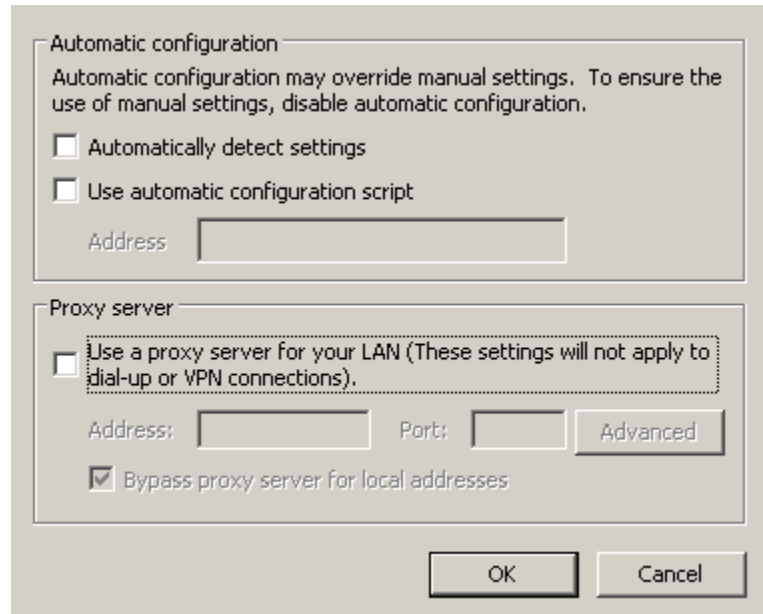
- Select **Tools** and then **Internet Options**.



- Select the **Connections** menu and click on **LAN Settings**.

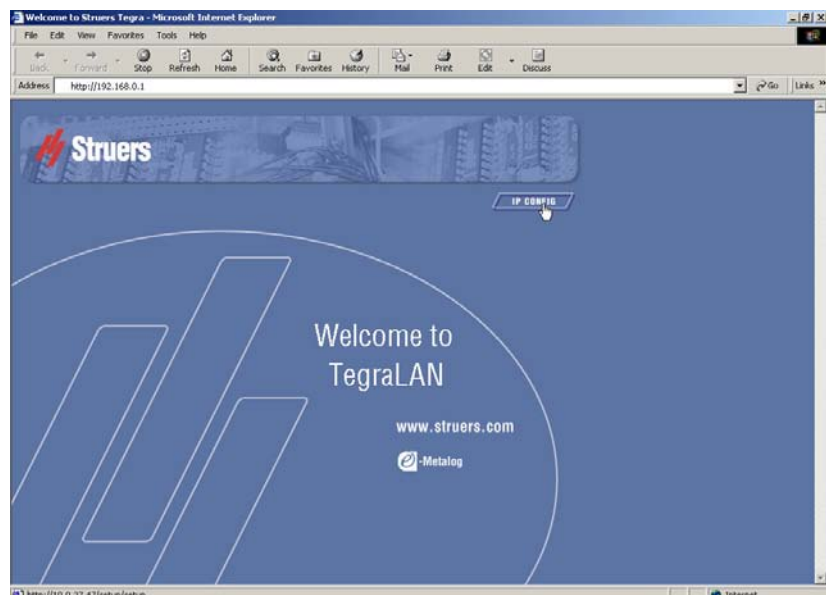


- Make sure that **none** of the boxes are checked.



- Click **OK** twice to return to the Internet Browser window.
- Enter the URL: <http://192.168.0.1>

The main page appears:



- Click on the link  and the following screen will appear.



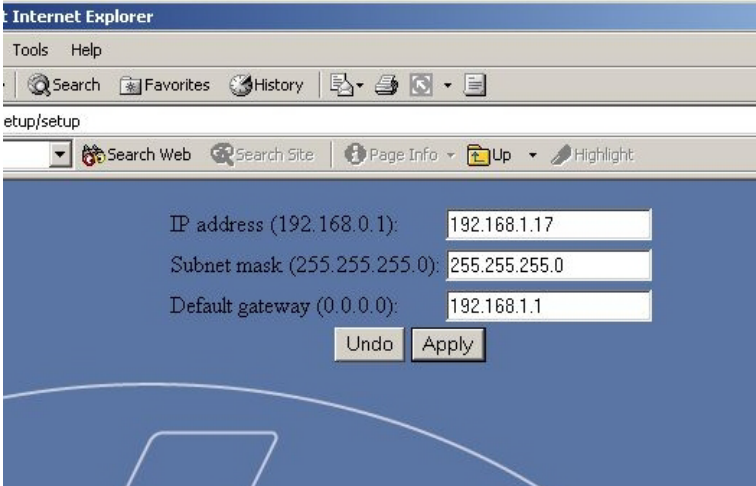
The dialog box is titled "Enter Network Password". It contains a key icon and the text "Please type your user name and password." Below this, there are labels for "Site:", "Realm", "User Name", and "Password". The "Site:" field is pre-filled with "192.168.0.1" and the "Realm:" field is pre-filled with "/setup/setup". There are empty text input fields for "User Name" and "Password". At the bottom, there is a checkbox labeled "Save this password in your password list" which is unchecked. There are "OK" and "Cancel" buttons at the bottom right.

- A prompt for a user name and password will appear. Enter 'admin' for both:



This dialog box is identical to the previous one, but the "User Name" field now contains the text "admin" and the "Password" field contains a series of "x" characters, indicating that the password has been entered and is being masked.

- Click **OK** and the following page will appear:



The screenshot shows an Internet Explorer browser window. The address bar shows "etup/setup". The page content includes three input fields for network configuration: "IP address (192.168.0.1):" with the value "192.168.1.17", "Subnet mask (255.255.255.0):" with the value "255.255.255.0", and "Default gateway (0.0.0.0):" with the value "192.168.1.1". Below these fields are "Undo" and "Apply" buttons.

- Enter the new **IP address**, **Subnet mask** and the **Default gateway**. All these addresses must fit the address system in your LAN otherwise communication between your network and the dosing unit cannot be established.
- Click **Apply** to save the settings.
- The new setting will be applied and the module will reboot. This will take approximately 20 seconds and the connection will be lost. The Struers LAN module is now ready for your LAN.
- Remove the **CROSSED** UTP cable between the dosing unit and the laptop and connect the dosing unit through a hub or switch to the LAN using a **STRAIGHT** 10/100 Base T Network cable, Cat.5 (also called a UTP Patch cable with RJ45 connectors).

The IP address can be changed if desired. The URL entered in the browser must contain the IP address that assigned last. If you assigned the IP address 192.168.1.17 then you will have to enter the URL <http://192.168.1.17/>.

***Important:***

Remember to reset your laptop to the original IP and Proxy settings. Otherwise connection to the LAN or the Internet communication might not work.



## Resetting the Struers LAN Module

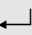
The Struers LAN Module can be set back to the default IP address (192.168.0.1) from the Configuration Menu on the dosing unit.

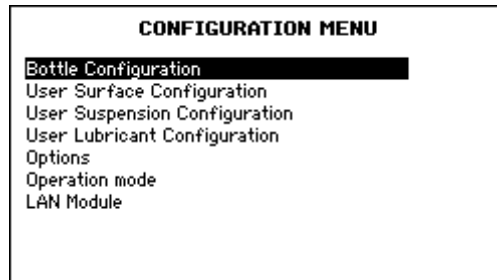
With the **MAIN MENU** displayed.



Use the Arrow buttons ▲▼ to select **Configuration**.



Press ENTER  to activate the **CONFIGURATION MENU**.

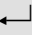


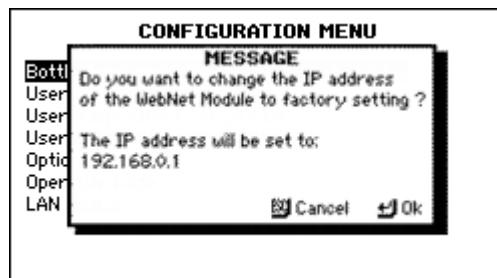
Use the Arrow buttons ▲▼ to select **LAN Module**.



Press ENTER  to activate the **LAN Module** menu.



Press ENTER  to reset the Struers LAN Module to the default address.



The Struers LAN Module can then be configured again with a new IP address following the procedure described above.

## 2. Installing the MethodPro Software on the PC

### Requirements

The Struers LAN Module software requires Windows NT, Windows 2000 or Windows XP and will probably run under any newer version of the Windows software.

It does not run properly under Windows 95, Windows 98 and Windows ME.

Installation of the software also requires administrative rights on the PC.

The CD contains both the MethodPro software along with Open Source versions of InterBase Server and InterBase Client.

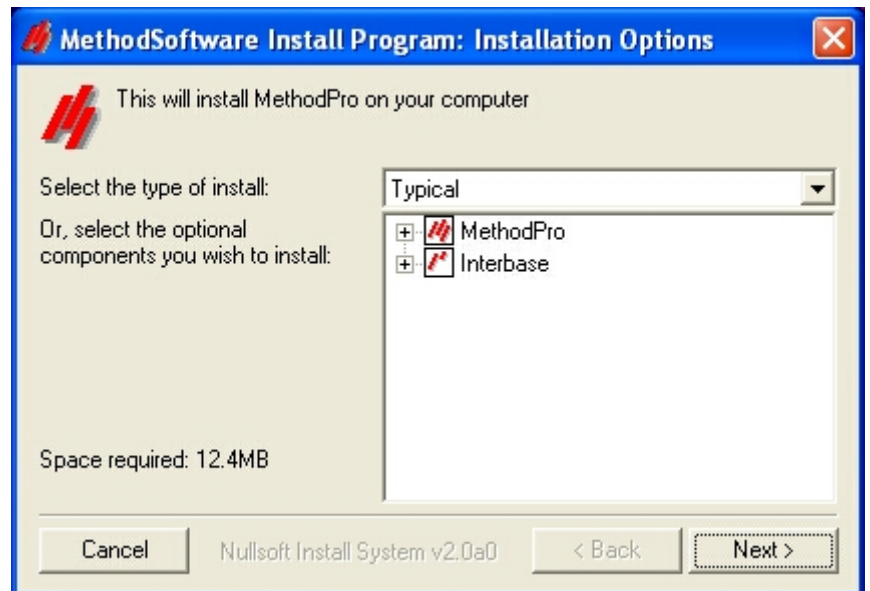
### Initial Steps

- Turn on the PC.
- Exit any open programs, including those that run automatically at start-up (such as Microsoft Office) and virus-scanning software.
- Insert the Struers CD-ROM into the CD-ROM drive.  
The installation program on the CD starts automatically. If this is not the case start Windows Explorer select the CD-Rom drive and double click the file Setup.exe.
- Select the language you prefer:



- Check the correct language and click on **Install**.

- From the following screen select which programs are to be installed.

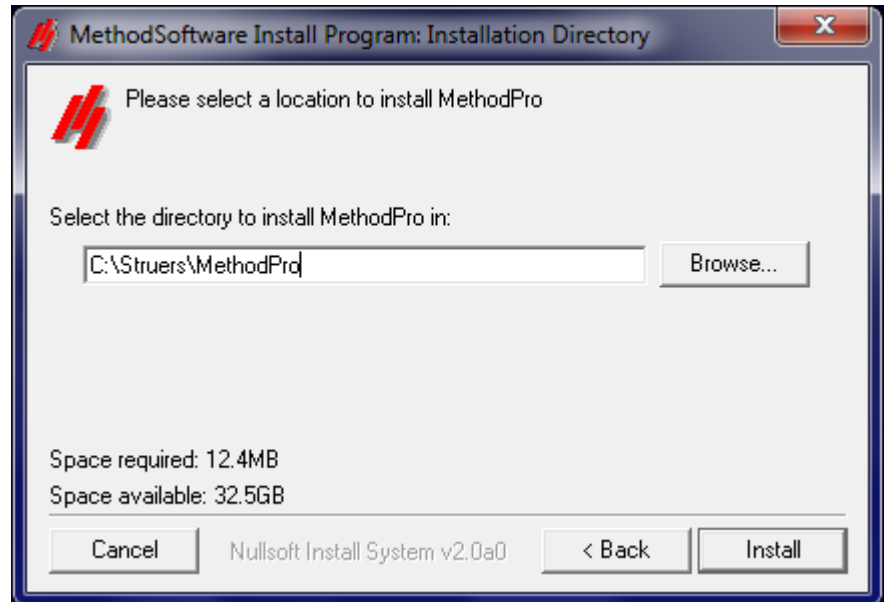


If the program is running on a network, the InterBase Server software must be installed on the network, or on a PC that is accessible at all times.

- For this installation:
  - either** select **Server**, which will only install the InterBase Server software,
  - or** select **Typical**, which will install the InterBase Server software and the MethodPro software.

On the following workstations **Client** can then be selected, which will install the InterBase Client software and the MethodPro software.

- After selecting the appropriate installation type, press **Install** to continue.



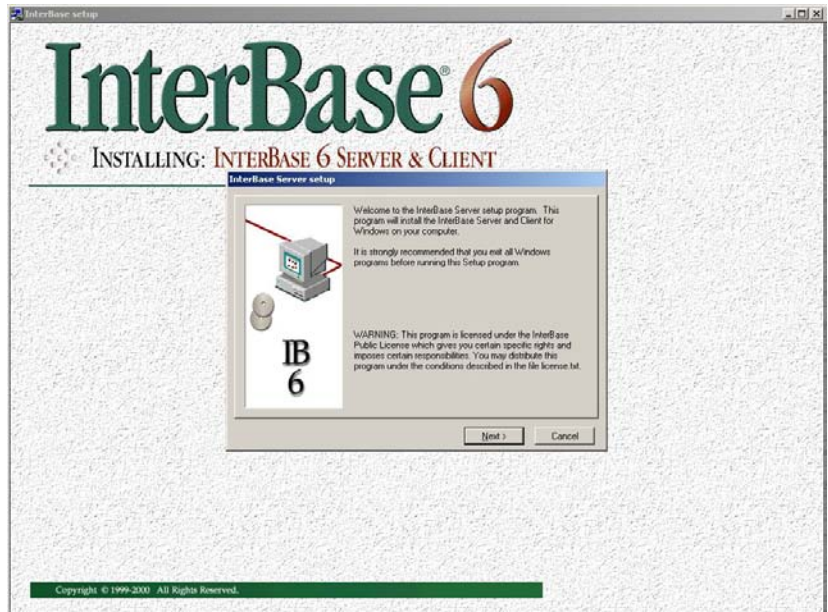
- Select the directory where the MethodPro software is to be installed and press **Install** again.

***Important!***

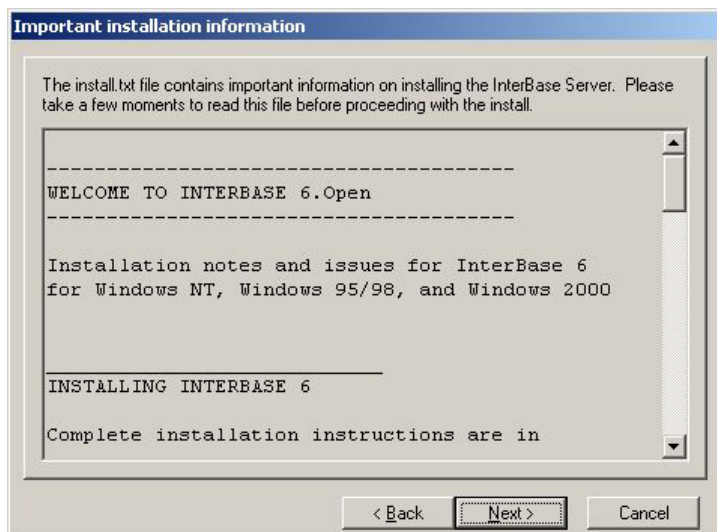
With Windows Vista and Windows 7 there is limited access to files when installed in *C:\Program Files\Struers\MethodPro*. Therefore another destination, e.g. *C:\Struers\MethodPro* must be selected. Otherwise MethodPro will not operate correctly.

After all the necessary MethodPro files have been installed, InterBase installation is then carried out.

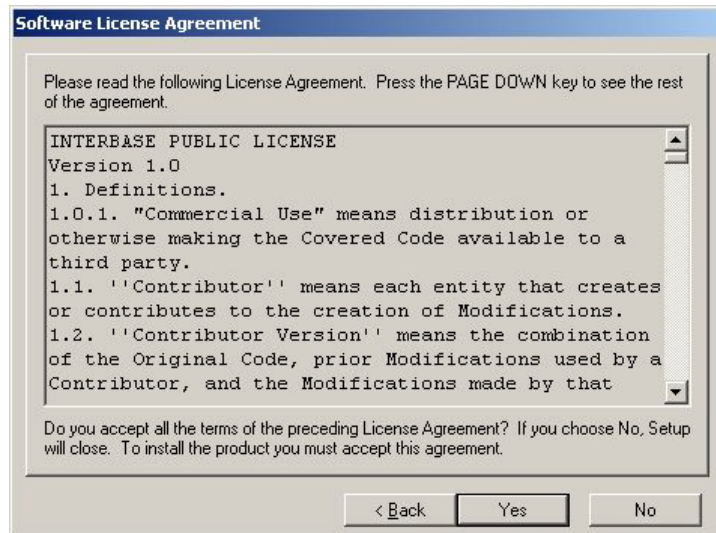
- Click **Next** to continue.



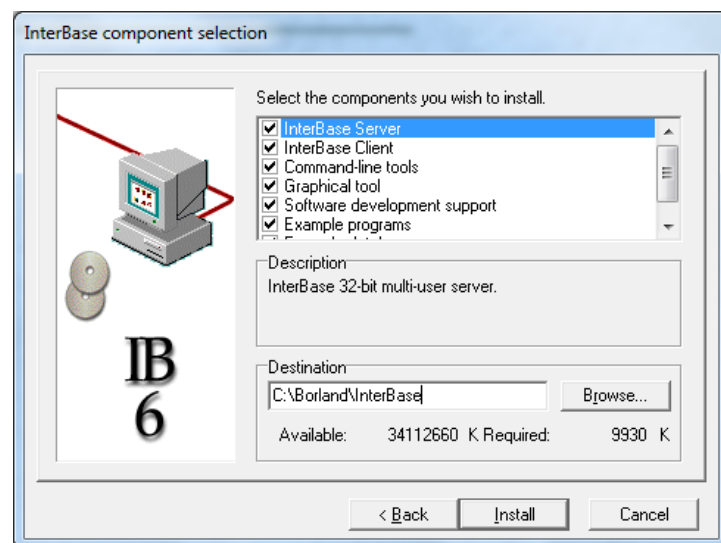
- After reading the Important installation information click **Next** to continue.



- Read the Software License Agreement and click **Yes** to continue.



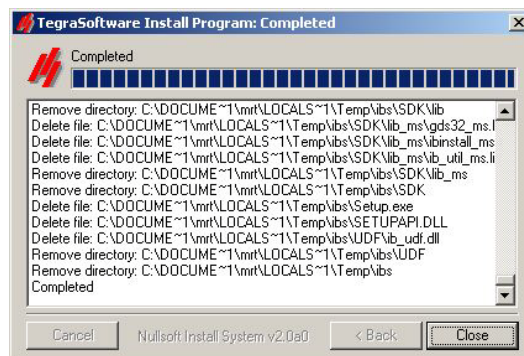
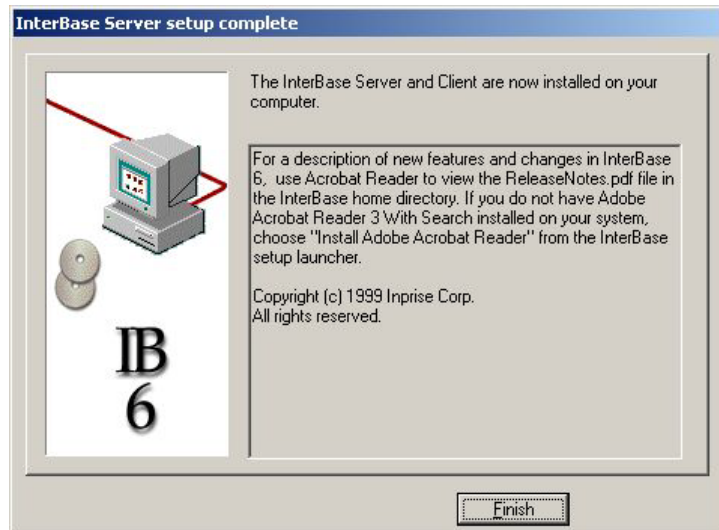
- Select the files to install and the **Destination** where the files are to be installed, then click **Install** to continue.



**Important!**

With Windows Vista and Windows 7 there is limited access to files when installed in *C:\Program Files\Borland\InterBase*. Therefore another destination e.g. *C:\Borland\InterBase* must be selected. Otherwise MethodPro will not operate correctly.

- The InterBase software is now installed, click **Finish** then **Close** to continue.



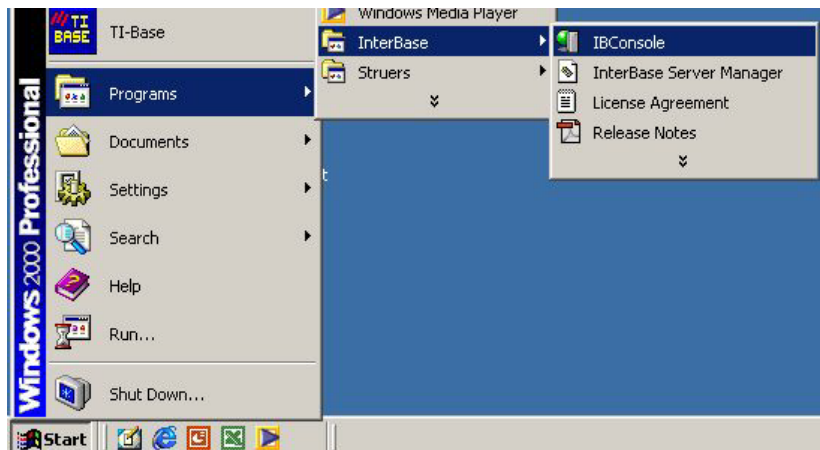
Installation of the software is now completed and the system has to be configured.

*Configuring a Server or Stand-alone System*  
(Typical installation)

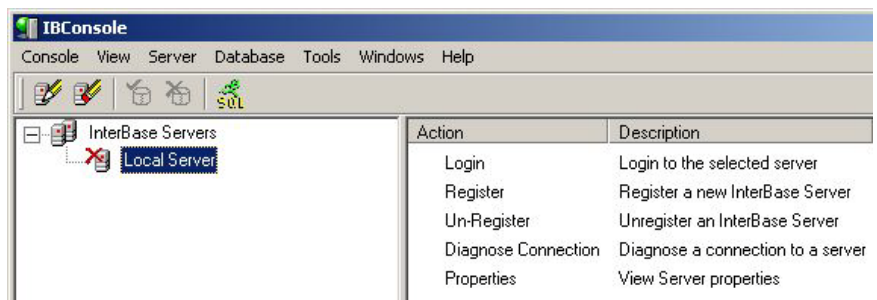
This procedure will include all you need (if you are in doubt as to which installation option to use, select this one).

After installing all the software on your system Click on **Start:**

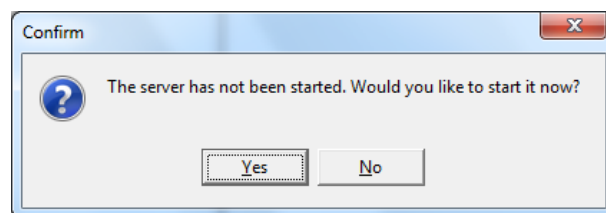
- Select **Programs**, then **InterBase** and click on **IBConsole**.



The following screen will appear:

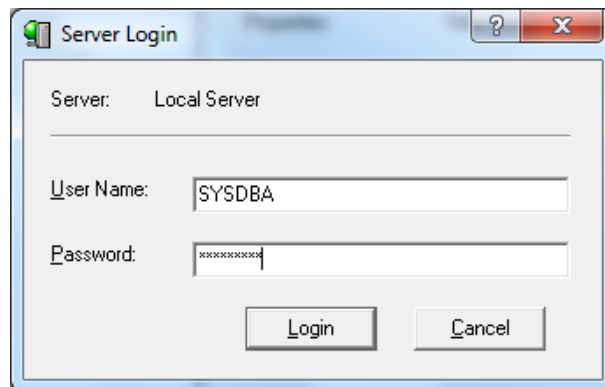


- Double click the **Local Server** icon in the left pane.

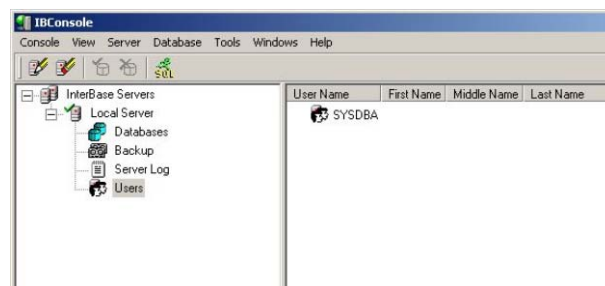


- Click **Yes** to start the server.

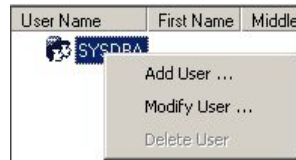




- When asked for a User Name enter SYSDBA; and “masterkey” as Password, then click **Login**
- Expand **Local Server** by clicking the + sign in front, then select Users by clicking the **Users** icon in the left pane.



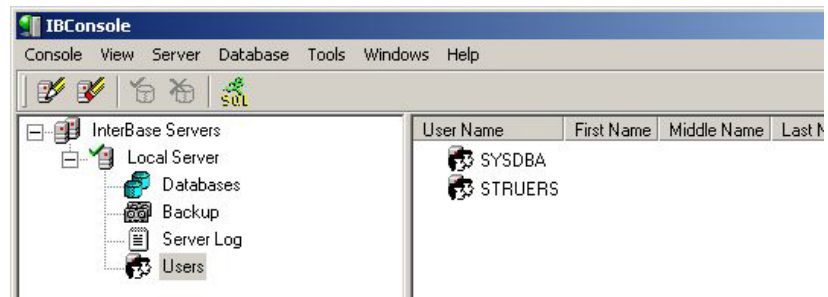
- Right-click on the **SYSDBA** icon in the right pane, and select **Add User**.



- Create a new user by entering “STRUERS” as User Name and "struers" (no capitals) as Password.

- Confirm the password.
- Click on **Apply** and then on **Close**.

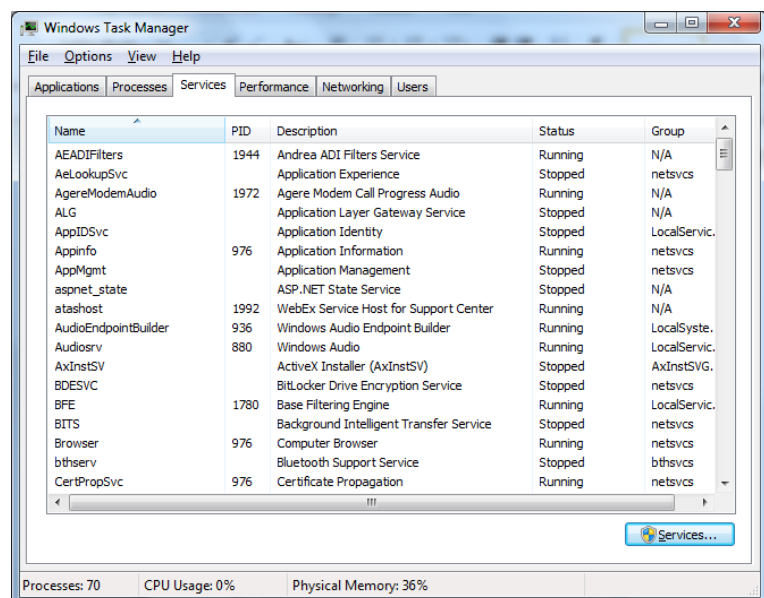
“STRUERS” can now be seen as a user.



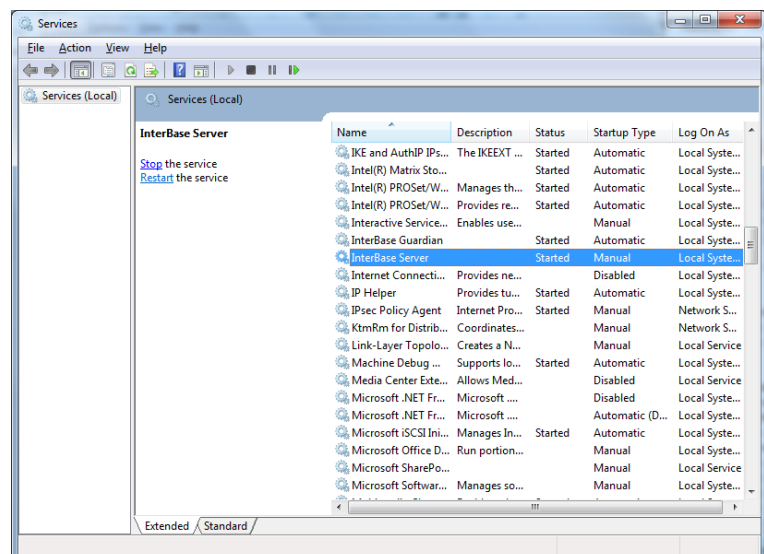
- Exit IBConsole.

## Struers LAN Module Installation Manual

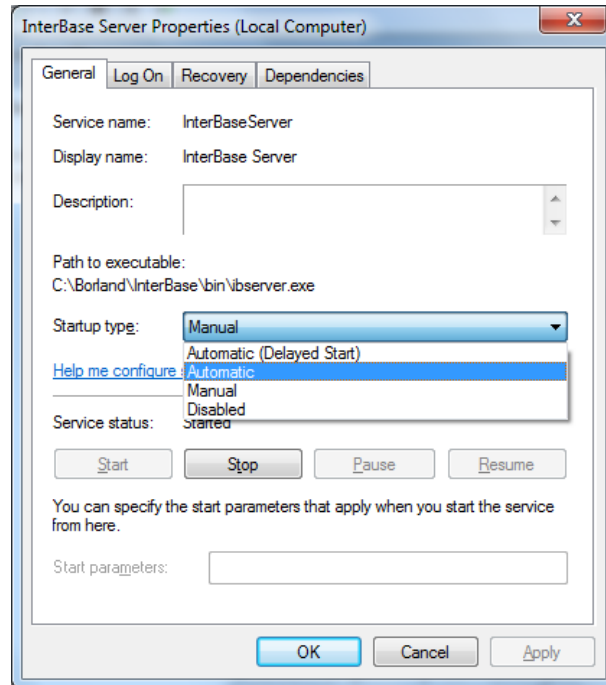
- Press **Ctrl. – Alt. - Del** and start the Windows Task Manager.
- Select the tab **Services** and click the Services button at the lower right hand corner.



- Click **Yes** when the UAC pop-up appears and the Services screen is displayed.



- Select **InterBase Server** and press **Enter**.



- Select **Automatic** and click **OK**.

You can now close both the Services window and the Task Manager.

***Important!***

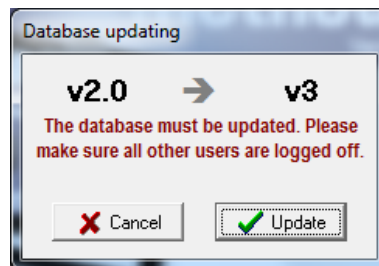
Restart your PC to allow the changes above to take effect.  
After restarting the PC continue with the installation as described on the following pages.

*Starting the MethodPro Software*

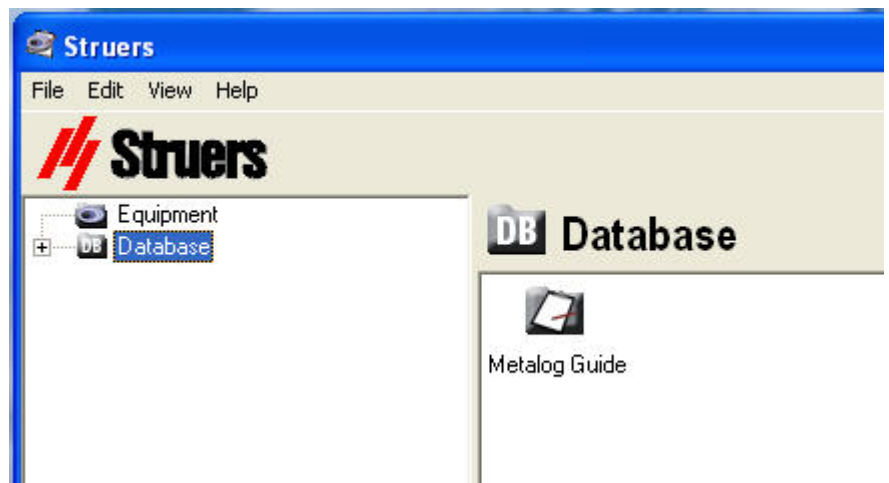
- Click on **Start**, select **Programs**, then **STRUERS** followed by **MethodPro** and click on **MethodPro**:



When MethodPro is started for the very first time, the database has to be updated.



- Click **Update** to start the process.  
When the update is completed the following screen is displayed:

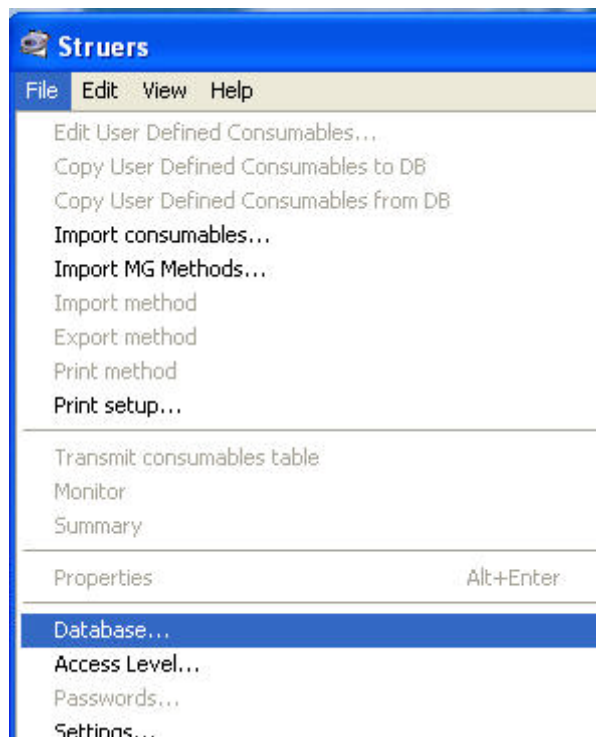


Before you can start working with the MethodPro software one last step of configuration might be necessary.

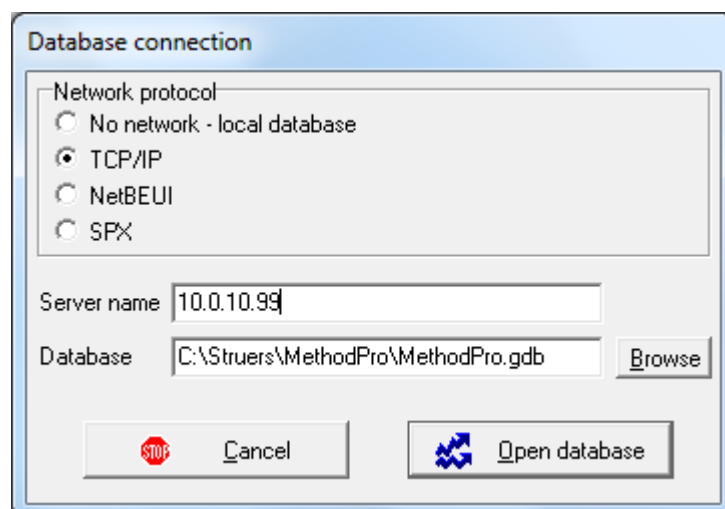
## Configuring the Database Server Configuration

When running the software on several PC's the database is located together with the InterBase Server version or at a location know to the InterBase Server software that was defined during the installation.

- Click on **File** and select **Database**.



- Select **TCP/IP** and set the **Server name** to the IP address of the computer where the database is located.

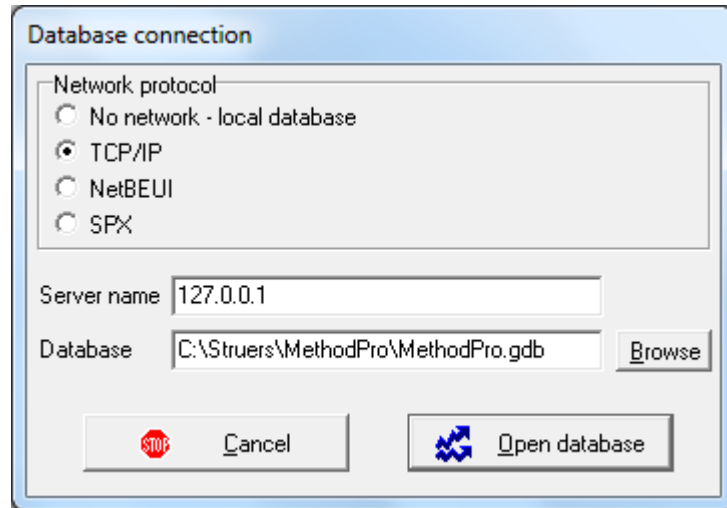


- Specify the location of the **Database** file MethodPro.gdb and click on **Open database**.

### Stand-alone Configuration

When the MethodPro software is installed on a single PC only, this is called a stand-alone configuration.

- Check **TCP/IP**, set the **Server name** to 127.0.0.1 and define the correct path for the location of the MethodPro.gdb database file.



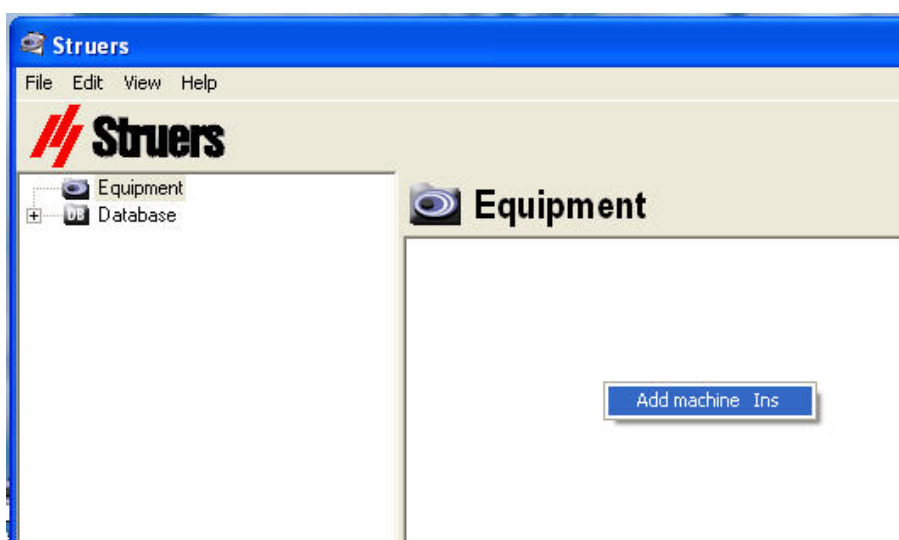
- Click on **Open database**.

## Operating the MethodPro Software

The Database shown already contains a group with the 10 Metalog Guide methods. As no machines are connected yet the equipment icon cannot be expanded.

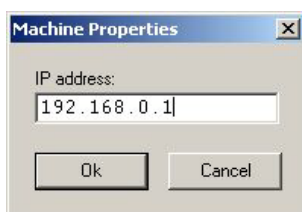
To set up connection to the dosing unit (TegraDoser-5/ TargetDoser) that is connected to your LAN:

- Click on **Equipment**.
- Right click in the right pane of the screen, or press the Ins key on the keyboard or Click **Edit** and select **Add machine**.



In the window Machine Properties.

- Type the IP address of your dosing unit and click **OK**.



A **New Machine** icon appears where a name can be entered to identify your system.

If the connection is not working properly an exclamation mark will be displayed on the icon.





- Check that the wiring is correct and that all the IP addresses, subnet masks and default gateways are correct.



- Click **View** and select **Refresh**  
or press F5 after selecting machine.

All the other functions are explained in an online help file. Simply press **F1** or select **Help** followed by **Help topics** and get a thorough explanation on how to use the MethodPro software.



Pederstrupvej 84  
DK-2750 Ballerup  
Denmark