

# Battery Pack

## Instruction Manual

**Original Instructions**



Doc. no.: 15967026-01\_A\_en-us  
Date of release: 2023-03-31

---

**Copyright**

The contents of this manual are the property of Struers ApS. Reproduction of any part of this manual without the written permission of Struers ApS is not allowed.

All rights reserved. © Struers ApS 2023.03.31.

---

# Table of Contents

<b>1</b>	<b>About this manual</b>	<b>4</b>
<b>2</b>	<b>Safety</b>	<b>4</b>
2.1	Intended use	4
2.2	Battery Pack safety precautions	4
2.2.1	Read carefully before use	4
<b>3</b>	<b>Getting started</b>	<b>5</b>
3.1	Device description	5
3.2	Battery Pack - overview	5
<b>4</b>	<b>Transport</b>	<b>6</b>
<b>5</b>	<b>Storage</b>	<b>7</b>
<b>6</b>	<b>Installation</b>	<b>7</b>
6.1	Connecting the battery charger	7
6.2	Charging the battery	8
<b>7</b>	<b>Maintenance and service</b>	<b>9</b>
7.1	General cleaning	9
7.2	Disposal	10
<b>8</b>	<b>Technical data</b>	<b>10</b>
8.1	Technical data - Battery Pack	10
8.2	Diagrams	11
8.2.1	Diagrams - Battery Pack	11
<b>9</b>	<b>Manufacturer</b>	<b>13</b>
	<b>Declaration of Incorporation of Partly Completed Machinery</b>	<b>15</b>

## 1 About this manual



### CAUTION

Struers equipment must only be used in connection with and as described in the Instruction Manual supplied with the equipment.



### Note

Read the Instruction Manual carefully before use.



### Note

If you wish to view specific information in detail, see the online version of this manual.

## 2 Safety

### 2.1 Intended use

The battery pack is for professional use in combination with these Struers products:

- TransPol-5
- MoviPol-5

The battery pack must only be charged by the battery charger for:

- MoviPol-5/TransPol-5

### 2.2 Battery Pack safety precautions



#### 2.2.1 Read carefully before use

Ignoring this information and mishandling of the equipment can lead to severe bodily injuries and material damage.

#### Battery Pack

1. The operator must be familiar with using the equipment as described in the Instruction Manual.
2. Only charge the battery pack with the battery charger supplied by Struers.
3. Do not remove the cover of the battery pack.

## 3 Getting started

### 3.1 Device description

- The battery pack is designed to be used with these Struers products:
  - TransPol-5
  - MoviPol-5
- Before use, examine the battery pack for damages.
- Insert the battery pack in the equipment.
- Connect the battery charger to the battery pack. The charger indicates when the battery is fully charged.

### 3.2 Battery Pack - overview

#### Battery Pack



**A** Battery pack inserted in machine with connection for charger



**B** Battery charger for the battery pack

# 4 Transport



**WARNING**  
Always remove the battery before transport.

## Air transport



**Note**  
Contact your transportation provider for information on local carriage restrictions.  
See the IATA website for further information.

- Carry-on baggage** You can transport spare battery packs as “Carry-on Baggage”.
- Checked baggage** You cannot transport spare battery packs as “Checked Baggage”.

## Battery Pack

- Operating environment 0 to 45°C/32 to 113°F
- Transport and storage -20 to +55°C/°F

For more detailed information, see the section **Technical data**.

**Battery charger**  
See the Instruction Manual for this unit.

**Transport restrictions**  
Certain restrictions may apply regarding the carriage of Lithium batteries.

Specifications - Battery pack	
Watt-hour rating	83.16 Wh
Classification	Small battery
UN-number	UN3481

It is recommended that the battery charge should be at 20% or less before transportation.

**Battery status indicator**

LED indicator	Charge
Orange	20% - 0%

## 5 Storage

**Note**

We recommend that you keep all original packaging and fittings for future use.

- Disconnect the unit from the electrical power supply.
- Remove any accessories.
- Clean and dry the unit before storage.
- Place the unit in its original packaging.

**Battery Pack**

Operating environment 0 to 45°C/32 to 113°F

Transport and storage -20 to +55°C/°F

For more detailed information, see the section **Technical data**.

## 6 Installation

### 6.1 Connecting the battery charger

When the battery pack is inserted in the machine, the equipment can be connected directly to the electrical power supply through the battery charger.

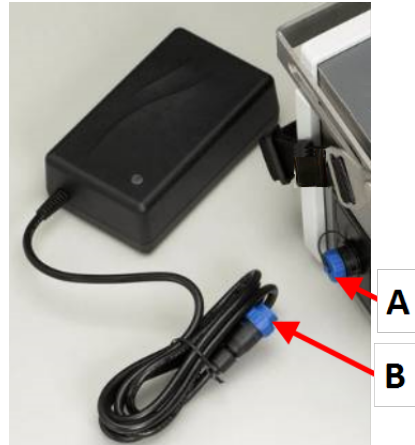
**CAUTION**

Always connect the battery charger to the battery pack before you connect the battery charger to the electrical power supply.

**Connecting the equipment to the electrical power supply**

You can connect the equipment to the electrical power supply:

1. Make sure that the battery pack is inserted in the machine.
2. Unscrew the cover covering the socket. **(A)**
3. Insert the plug from the battery charger into the socket. **(B)**
4. Connect the battery charger to the electrical power supply.



### 6.2 Charging the battery



#### **CAUTION**

Always connect the battery charger to the battery pack before you connect the battery charger to the electrical power supply.

1. Connect the battery charger to the battery pack.
2. Connect the battery charger to the electrical power supply.

The LED turns green when charging is complete.



#### **Note**

If you need to check the battery level, connect the battery to the charger or the machine.



**Battery status indicator**

LED indicator	Charging level	Status
Orange	20% - 0%	Maximum charge current (2 A).
Yellow	60% - 21%	The battery is charged 80 - 95 %. The charger is in timer mode and the current is less than maximum. Charging will continue for a set amount of time up to 4 hours.
Green	61% - 100%	The battery is charged 95 - 100%. Charging has stopped.

## 7 Maintenance and service

Proper maintenance is required to achieve the maximum up-time and operating lifetime of the machine. Maintenance is important in ensuring continued safe operation of your machine.

The maintenance procedures described in this section must be carried out by skilled or trained personnel.

### **Safety Related Parts of the Control System (SRP/CS)**

For specific safety related parts, see the section "Safety Related Parts of the Control System (SRP/CS)" in the section "Technical data" in this manual.

### **Technical questions and spare parts**

If you have technical questions or when you order spare parts, state serial number and voltage/frequency. The serial number and the voltage are stated on the type plate of the machine.

## 7.1 General cleaning

To ensure a longer lifetime for your unit, Struers strongly recommends regular cleaning.



**Hint**  
Do not use a dry cloth as the surfaces are not scratch resistant.



**Hint**  
If needed, use ethanol or isopropanol to remove grease and oil.

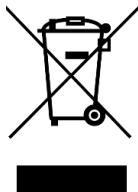


**Hint**  
Do not use acetone, benzol or similar solvents.

**If the unit is not to be used for a longer period of time**

- Clean the unit thoroughly.

**7.2 Disposal**



Equipment marked with a WEEE symbol contains electrical and electronic components and must not be disposed of as general waste.

Contact your local authorities for information on the correct method of disposal in accordance with national legislation.

For disposal of consumables and recirculation fluid, follow local regulations.

**8 Technical data**

**8.1 Technical data - Battery Pack**

Battery	Battery internal fuse	30 A T
	Battery rating	83.16 Wh
	Equipment input fuse	15 A T (6.3 x 32mm)
	Thermal overload protection	70°C/158°F

<b>Battery pack</b>	Nominal voltage	25.2 V
	Charge voltage	29.4 V
	Energy	83.16 Wh
	Capacity	3.3 Ah
	Max. charge current	3 A
	Max. discharge current	15 A
	Operating environment	0 to 45°C/32 to 113°F
	Transport and storage	-20 to +55°C/°F
	UN-number	UN3481

## 8.2 Diagrams

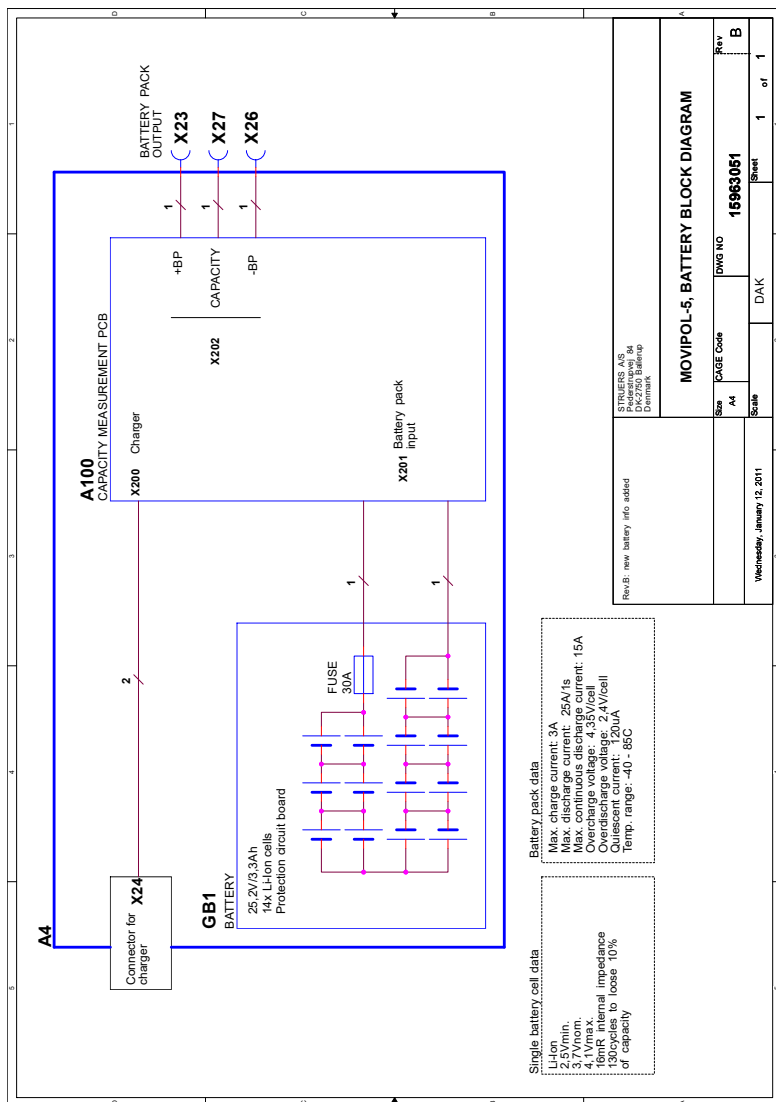
If you wish to view specific information in detail, see the online version of this manual.

### 8.2.1 Diagrams - Battery Pack

#### Battery pack

Title	No.
MoviPol-5, Battery, Block diagram	<a href="#">15963051 B</a>

**15963051 B**



## 9 Manufacturer

Struers ApS  
Pederstrupvej 84  
DK-2750 Ballerup, Denmark  
Telephone: +45 44 600 800  
Fax: +45 44 600 801  
[www.struers.com](http://www.struers.com)

### **Responsibility of the manufacturer**

The following restrictions should be observed, as violation of the restrictions may cause cancellation of Struers legal obligations.

The manufacturer assumes no responsibility for errors in the text and/or illustrations in this manual. The information in this manual is subject to change without notice. The manual may mention accessories or parts not included in the supplied version of the equipment.

The manufacturer is to be considered responsible for effects on safety, reliability, and performance of the equipment only if the equipment is used, serviced, and maintained in accordance with the instructions for use.




## Declaration of Incorporation of Partly Completed Machinery

Manufacturer	Struers ApS • Pederstrupvej 84 • DK-2750 Ballerup • Denmark
Name	Battery Pack
Model	N/A
Function	Accessory for TransPol-5 and MovPol-5
Type	596
Cat. no.	05966204

The above listed machinery is only intended to be used with:  
And shall not be put into service until the final machinery into which it  
is to be incorporated has been declared in conformity with this  
regulation, where appropriate.

Serial no. \_\_\_\_\_

 Module H, according to global approach

**EU**

We declare that the product mentioned is in conformity with the following legislation, directives and standards:

**2006/66/EC**

**2011/65/EU**

**2014/35/EU**

EN 63000:2018

EN 60204-1:2018, EN 60204-1-2018/Corr.:2020

Authorized to compile technical file/  
Authorized signatory

Date: [Release date]

en For translations see  
bg За преводи вижте  
cs Překlady viz  
da Se oversættelser på  
de Übersetzungen finden Sie unter  
el Για μεταφράσεις, ανατρέξτε στη διεύθυνση  
es Para ver las traducciones consulte  
et Tõlked leiate aadressilt  
fi Katso käännökset osoitteesta  
fr Pour les traductions, voir  
hr Za prijevode idite na  
hu A fordítások itt érhetők el  
it Per le traduzioni consultare  
ja 翻訳については、  
lt Vertimai patalpinti  
lv Tulkojumus skatīt  
nl Voor vertalingen zie  
no For oversettelser se  
pl Aby znaleźć tłumaczenia, sprawdź  
pt Consulte as traduções disponíveis em  
ro Pentru traduceri, consultați  
se För översättningar besök  
sk Preklady sú dostupné na stránke  
sl Za prevode si oglejte  
tr Çeviriler için bkz  
zh 翻译见

[www.struers.com/Library](http://www.struers.com/Library)